

Reserve 233

Crown Land

AVENUE

BYRON STREET

Reserve

SUVLA

Reserve 84

60-25	70-105	50-29	30-175	49-89
Presbyter'n	Methodists	Baptists	Unsect'n	
1	2	3	8	4
58-18	70-105	50-29	30-175	49-89

ROAD 20-115 WIDE

STREET

STREET

120-58	70-115	108-57
Ch. of England	Jews	Roman Catholic
7	6	5
75-54	20-115	97-77

Reserve

STREET

ANZAC

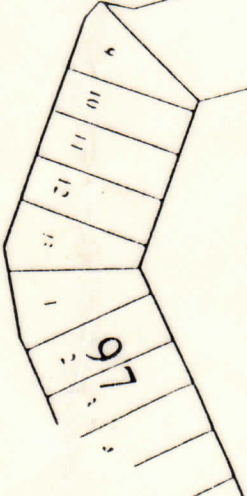
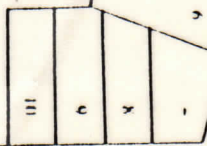
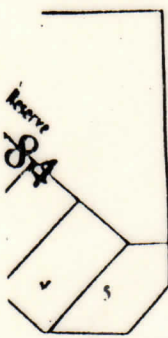
AND PARK

SE

Reserve for Public Recreation 410

95

97



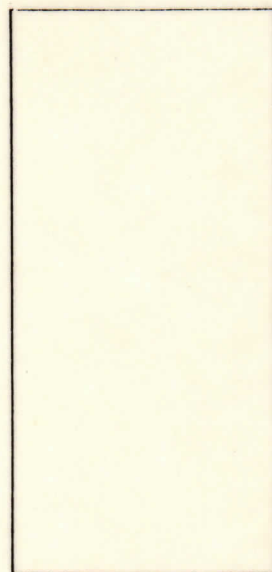
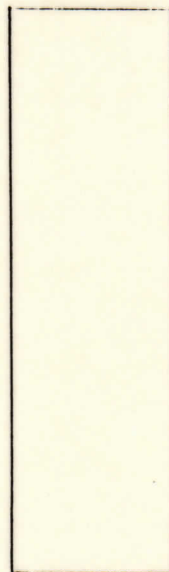
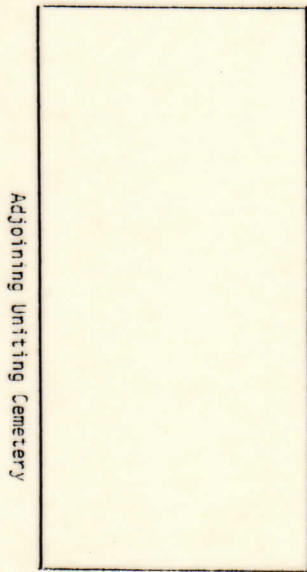
BAPTIST, SEVENTH DAY ADVENTIST AND NON-SECTARIAN CEMETERIES

Pine Avenue (To Byron Bay).

BAPTIST CEMEIERY

SEVENTH DAY ADVENTIST
CEMETERY

NON-SECTARIAN
CEMETERY

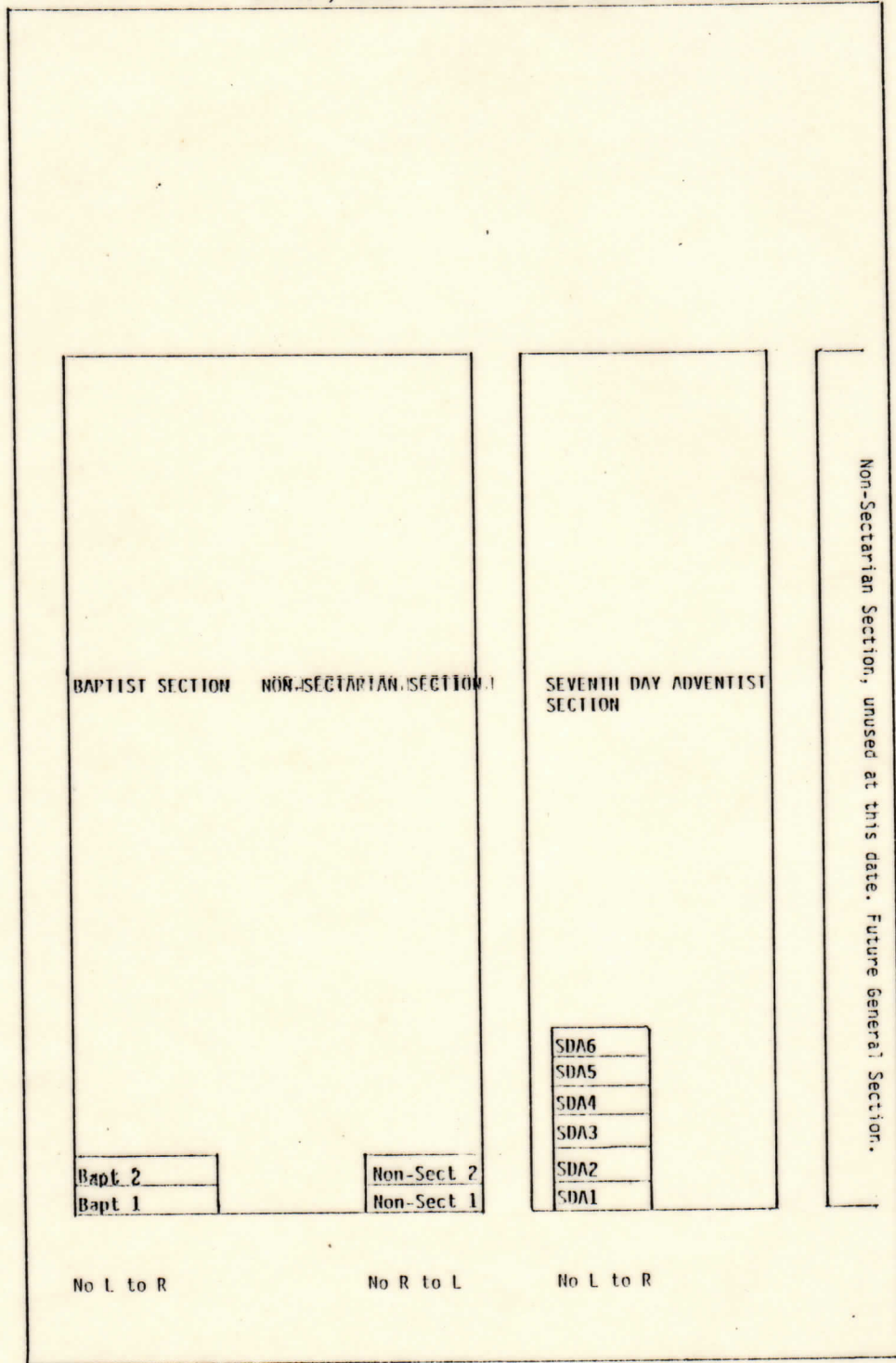


Adjoining Uniting Cemetery

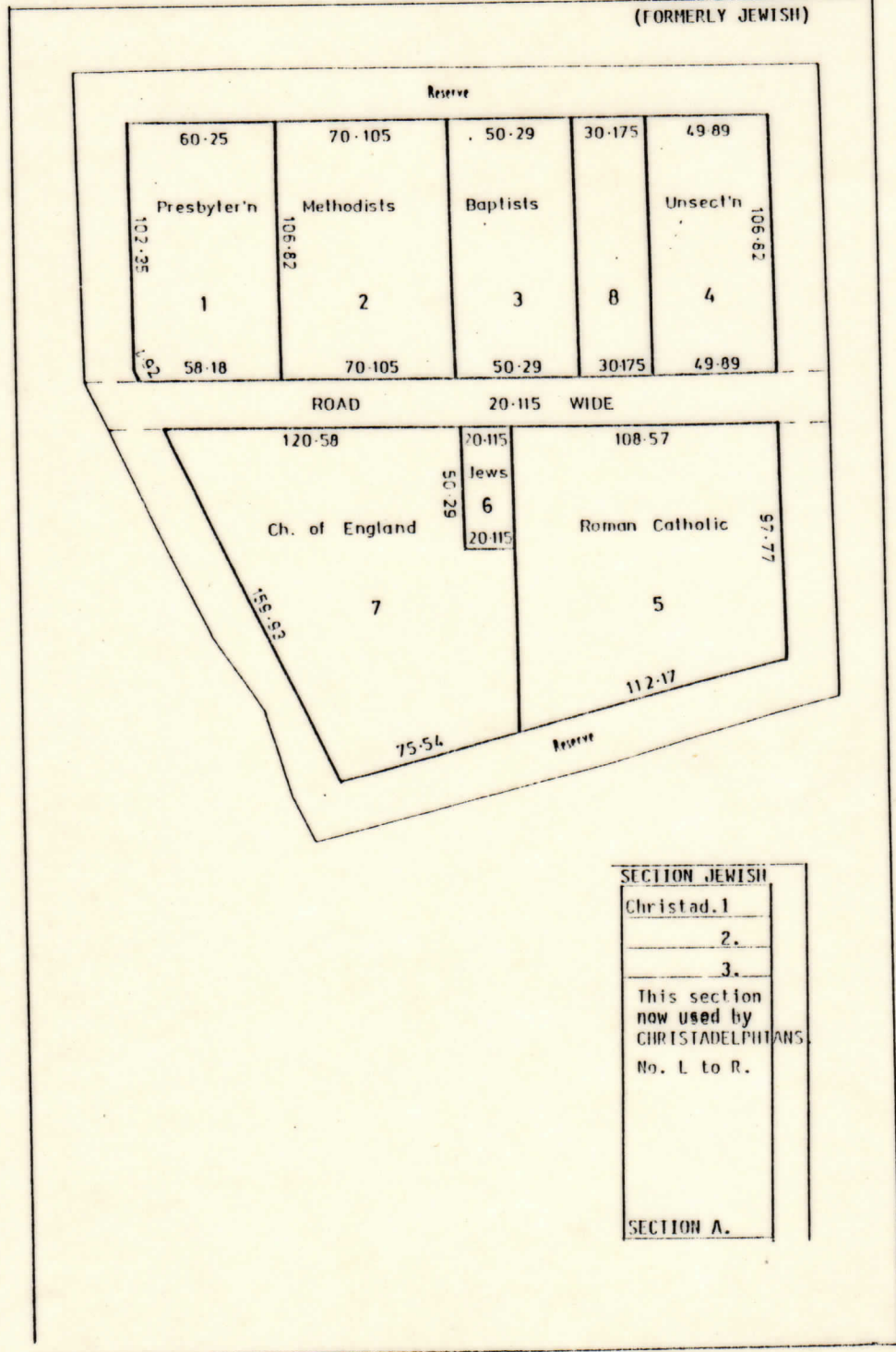
Northcott Ecumenical

Catholic Cemetery

BAPTIST, SEVENTH DAY ADVENTIST AND NON-SECTARIAN SECTIONS



CHRISTODELPHIAN CEMETERY
(FORMERLY JEWISH)



SECTION JEWISH	
Christad. 1	
2.	
3.	
This section now used by CHRISTADELPHIANS.	
No. L to R.	
SECTION A.	